

TUCANO 530

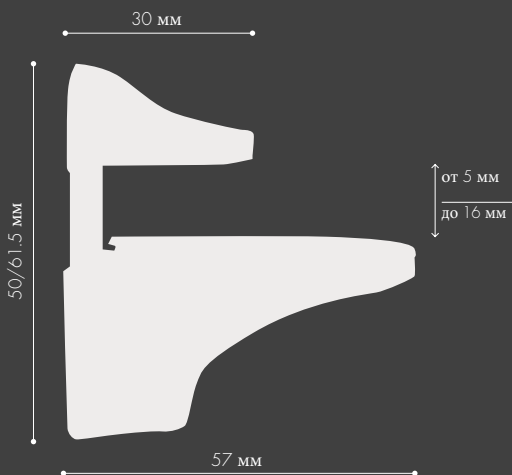
арт. 0530

Подходит для установки стеклянных полок  
толщиной от 5 до 16мм.

Грузоподъемность на пару полкодержателей - 30кг.

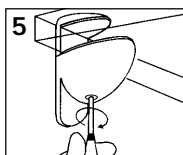
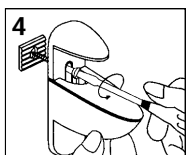
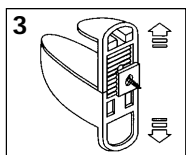
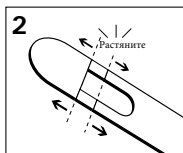
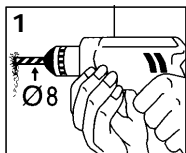
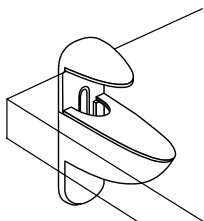
*Suitable to support 5 to 16 mm thick glass shelves.*


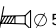
*Maximum capacity per pair: 30 kg.*



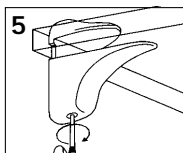
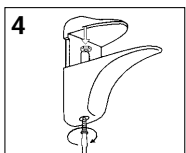
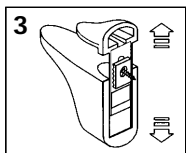
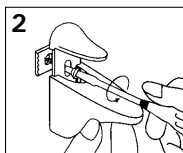
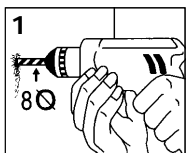
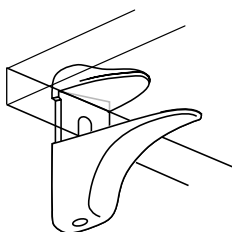
# Инструкция по установке


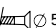
## Тусано 666



\*   $\varnothing 8$    $\varnothing 5$

## Тусано 530



\*   $\varnothing 8$    $\varnothing 5$